

Master Series

Multi-platform Controller
S-AG39

APPLY TO



Instructions

Please carefully read the instruction before using this product, and retain it for future reference.



Warning **Read it carefully**

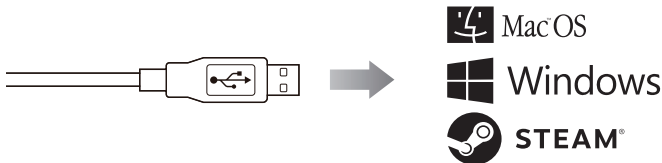
To prevent damages, pay attention to the following

- Do not apply insect spray or other volatile substances.
- Don't contact with water, juice or other liquids! It may lead to gamepad malfunction or damage.
- Do not touch the USB cable with wet hands.
- Don't use it in wet or stuffy place, like bathroom.
- Do not use the product come into contact with dust or magnetic.
- Do not place it on the heat-generating equipment such as the heat exchanger outlet, computer case, etc.

Precautions when using

- Don't press it too hard, that may cause the tiredness of your hand and the loss of buttons.
- If you feel pain in your wrist or fingers during use, please adjust your posture and strength, or stop using it.
- Please stop using if it causes any discomforts in your wrist or any other parts that are in direct contact with skin. You may cause a rash or allergic reaction under continued use.

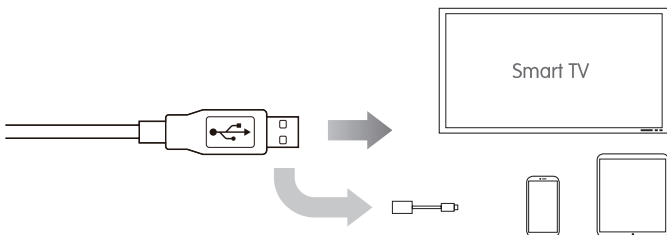
Compatibility



The mode of X and D - Windows7/8/10/11 and MacOS

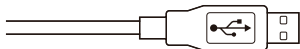
Windows operating system can use X & D mode in this controller.

- X mode = X input, which is widely applied to AAA Games and the newest games of Microsoft and Steam.
- D mode = D input, which is compatible with windows, analog games, etc.



D mode - Android system (Android phone/Tablet/Smart TV/TV box etc)

- The device needs to support wireless connection when connecting to portable devices like phone/Tablet etc.
- For vibration function please refer to the manufacture standard when connecting to android.
- Its not available for the gaming only with touchscreen setting without controller function.



S mode for NINTENDO SWITCH

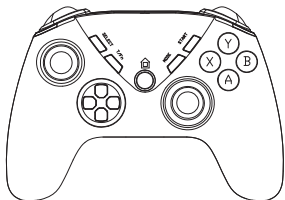
- It supports switch and Xinput/Dinput in PC.
- It supports activation function for switch console and controller.
- It supports axis gyro function when connect with switch console.
- It has build-in dual-sensor motor function with adjustable Motor vibration strength.
- It supports PC360 mode in PC end by downloading and installing PC 360 Driver.
- It supports Turbo in &out function, as well as adjustable speed.
- It supports USB Cable connection with wired controller of Switch Console host base, and wireless connection when the data cable is unplugged.
- It comes with four programmable macro definition functions to program different keys.

V mode for Iphone & Ipad

- When connecting to iOS devices, use the wireless connection of gamepad and select V mode.
- Please note it comes without analog touch and any other functions not mentioned.
- It is not suitable for any games without MFi controller in setting.

Package list/optional accessories

Please check and confirm all accessories mentioned



1* controller



1* instruction



1* USB charging cable



1* Spare
D-Pad button



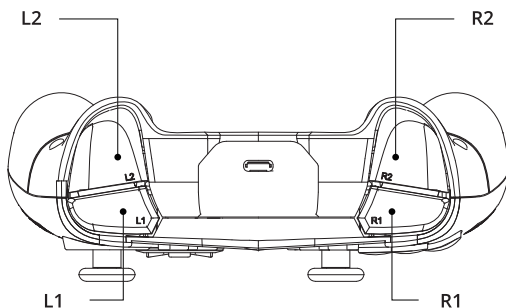
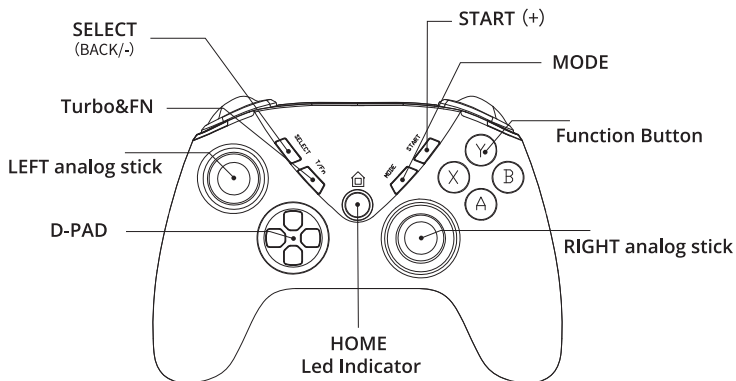
2* Spare
3D Thumb Grip Caps

Maintenance & Repair

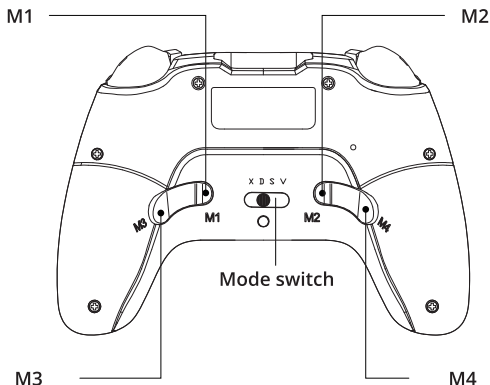
(Follow the instructions below to prevent the product case from deteriorating or discolored)

- Wipe the gamepad with a soft and dry cloth, or a special cleaning cloth.
- Don't use solvents that may cause external deformation or layers falling, such as gasoline, thinner, alcohol, kitchen detergent, chemical wipes, etc.
- Don't wipe with wet rags that may cause internal malfunction with penetrated liquid.
- Do not apply insecticides or other volatile substances.
- Do not place any rubber or vinyl materials on the product for an extended time.

Keys' Layout



Keys' Layout



Basic Connection

It comes with activate function for any buttons, please select the related device mode before wireless connection.

X : Wireless Xinput mode/PC mode- Device ID: Xbox Wireless Controller

D : Wireless Dinput/Android mode-Device ID: S-AG39

S : Switch mode- Device ID: Pro Controller

V : Apple IOS mode- Device ID: Xbox Wireless Controller

Pairing Mode: Long press HOME button for 3 sec when power off. When indicator light flashes, it is in pairing mode, and then you can connect it to Devices ID mentioned as above.

Change the Paired Device: Long press HOME button for 5 sec when power off, and then select related device and long press home Button for 3 sec and restart to pair.

Wired Connection: Use USB cable in the package to connect directly.

Features

- Compatible with Windows 7/8/10/11 and Steam Platform(X mode)
- Compatible with Android phone/tablet/smart TV/TV box(D mode)
- ABYX, right analog stick with LED light
- Enhance game experience with the design of high reliability
- Cool buttons with build-in light & adjustable dual vibration motors
- Identification of smart devices & selective mode

How to connect to SWITCH

A. First time connecting to controller: turn the Switch console on, click controller of the main menu in the console- change grip, enter pairing mode of the console

B .Shift S from back side of the controller, long press home button for 3 sec to turn controller on , LED light on for 3 sec, the 4 LED light will flash when in search mode. When the 4 LED lights remain on, the devices are paired with each other, now press the home button

C. Connect the controller to console again: short press the HOME button for 1 sec, connection will commence automatically, then press the home button again

D. Controller & console pair back

1. Short Press any button to wake the controller when the console is in sleep mode, Console and gamepad connect automatically when all led lights flash
2. Short press Home button of controller to wake switch console when it stays sleep mode (not airplane mode) Console and gamepad connects automatically
3. Connect to switch console by USB cable:

First select the wired connection function of pro controller from console settings, Controller connects to Console by USB Cable as wired switch Controller, the indicator of the controller shows the charging state and will keep flashing. When the USB cable is unplugged, the controller turns on wireless mode and automatically reconnects to the phone.

PS:

1. Wake controller buttons on:


Home Button, A/B/X/Y ,D-pad, select,start button, L1 ,R1 button, screenshot button

2. Button to wake switch on : Home button

3. Long press home button over 5 sec to turn controller off

4. A B X Y function is not exact same with original switch controller, can adjust it from console settings

Extended functions



This product has many advanced functional designs, learn more about them below and use as desired to obtain a better gaming experience.

Button backlight brightness adjustment

Press T/FN button, click left or right of D-pad to adjust Button backlight brightness level. It has Four levels of brightness.

0 means turn off the light, press T/FN+ D-Pad right button to Enhanced in turn, 3 means the Brightest.

To avoid the backlight interfering with you and others, we advise to turn this function off or reduce the brightness of the light when using this product during at night.

Vibration intensity adjustment

Press T/FN, click up or down of D-PAD button to adjust the Vibration intensity of the controller. 0 means turn off the vibration, press T/FN+ up key of D-PAD to Enhanced in turn, 3 means the highest vibration intensity.

Analog stick sensitivity adjustment

Press T/FN button, turn left with any of the stick to reduce the degree of stick movement range to slow down the sensitivity in gaming.

Press T/FN, hit any analog to the right to increase the maximum movement range of the joystick for one gear. The sensitivity of the two analogs is independent, with a total of 3 gears. The default is set to be the highest sensitivity.

The Display of Gamepad Power

Turn the controller on with any mode, the home button indicator lights turn on for 2 seconds to indicate power capacity.

Battery Indicator: 4 LED lights mean 76-100%, 3 LED Lights mean 51-75%, 2 LED lights means 26-50%, and 1 LED means 0-25%. The controller battery lasts 7-10 hours. Please charge it when necessary.

The Marco Definition of Function buttons

1. Turn on function button record : Press T/Fn+M1/M2/M3/M4 while the controller is working, ex: T/Fn+M1 buttons need to turn M1 customization mode on, the back light of right analog stick changes from blue to red.

2. Then press any buttons need to be customized in turn (support A B X Y up down left right L1 L2 R1 R2 buttons setting) short press the button after finishing, it means the setup completes when The led light of the right analog stick changes from red to blue. (ex: press T/Fn+M1, the light of the right analog stick turns blue to red, press A B X Y in turn, short press M1 to save the setting and exit, the light of the right analog stick changes from red to blue press M1, M1 function instead of A B X Y).

3. Delete the Macro definition: When controller is working, press T/Fn+M1, enter programming mode, the light of the right analog stick changes from blue to red, wait for seconds, short press M1, the light of the right analog stick changes red to blue, then all Macro definition is deleted.

LED instructions

1.4 Led lights flash: The controller is searching for wireless pairing, the controller is connecting to console by the wireless.

2. LED flashes quickly, Low voltage indication: The Battery voltage of controller is below 25%; the controller turns off automatically and is unable to boot.

3. LED light on all the time: Controller is connected with the console via the wireless in working mode.

4. LED flashes slowly, charging indication: The controller is connected to the console via USB cable; when the controller is charging ,4 led lights flash slowly, once full charged, led lights are all off.

5. The controller is on all the time when charging or connected with USB, long press home button without out any reaction (right analog stick and XYAB lights on, Home button light flashes).

Connection function

	Apple	android	STEAM	SWITCH	Xinput	Dinput
Vibration	YES	NO	YES	YES	YES	NO
TURBO	YES	YES	YES	YES	YES	YES
Trigger	YES	YES	YES	NO	YES	NO

TURBO function setting

Turbo function

Press T/Fn first, press any function button of the controller(A/B/X/Y/L1/R1/L2/R2) to start the Turbo function, PRESS T/Fn+same button to cancel it.

TURBO speed adjustment

3 levels speed adjustable : Long press turbo, hold, pull down the right 3D analog stick to slow the turbo speed down about 1 level, also one Home or Led light on. Long press turbo, hold, pull up right 3D analog stick to speed up to raise the speed . Factory default is level 2.

Level 1: Turbo speed is 5 times per sec, 1 led light on

Level 2: continue speed is 12 times per sec ,2 led lights on by factory default speed

Level 3: continue speed is 20 times per sec, 3 led lights on

Reset Controller

Just reconnect it by plugging in and out the USB cable, if there is nothing shown at first plug. You can also manually select the mode. Please press HOME for 10 sec or check the compatibility of operate running system with this gamepad. If there are still some unsolved problems, please contact ISHAKO support team.

Copyright

Playstation copyright from SIE
Xbox/Windows copyright from Mirosoft Corporation
Android copyright from Google Inc
Nintendo switch copyright from Nintendo
MacOS copyright from Apple Inc
All related copyrights appeared in this instruction can be only explained by themselves. There is none [™] or [®] in this instruction.

Please contact customer service or check on our homepage for any updating firmware.

Specifications

Specifications	Reference
Operating Voltage	DC 3.7-4.2V
Operating Current	10 - 40mA
Sleep mode Current	10uA - 50uA
Vibration Current	80 - 130mA
Input Power	5.0 --- 500mA
Battery Capacity	3.7V / 600mAh
Charging Time	est 2-4 H
Working Distance	≤ 8M
Executive Standard	Q/0212LSKJ0910-2019

Controller

Direction	*1	Up, down, left, right, and all 8 directions can be simply operated.
Action Control	*4	A, B, X, Y are in perfect design with effective response.
Home	*1	Turn on gamepad or receive command from switch by pressing it for 5 sec.
Left/Right analog stick	*2	Unique 3D design and 360 degree to hit the target.
Shoulder & trigger	*4	L1, L2, R1, R2. Slight press them to enjoy games.
LED light bar in controller		4 LED are on.
Screenshot	*1	Press share to screenshot any of the photos or videos.
TURBO	*1	Customized TURBO function with continuous button & cancellation.
Back-end programming	*1	M1, M2, M3, M4 are customized buttons. Press them according to your needs.
Controller turn to sleep mode automatically within 5 min without any operation		

Components

DC IN wired connection with USB-A
USB cable length is about 2.2 meters

Contact us



www.sakoglobal.com



cs@sakoglobal.com



[@lshakomall](#)

Kindly register for warranty and after-sales service on our official website. We will provide you professional technical support for one-year free.

If you have any questions, kindly contact customer support

Thank you for your purchase

Join us to get 1 year extended warranty or get a gift.

Multi-platform Controller
S-AG39

KK
ISHIKAWA

*Born for fun
Play like pro*



APPLY TO

